

IES Report

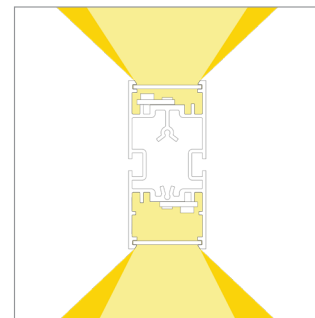
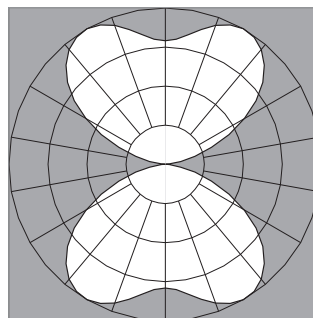
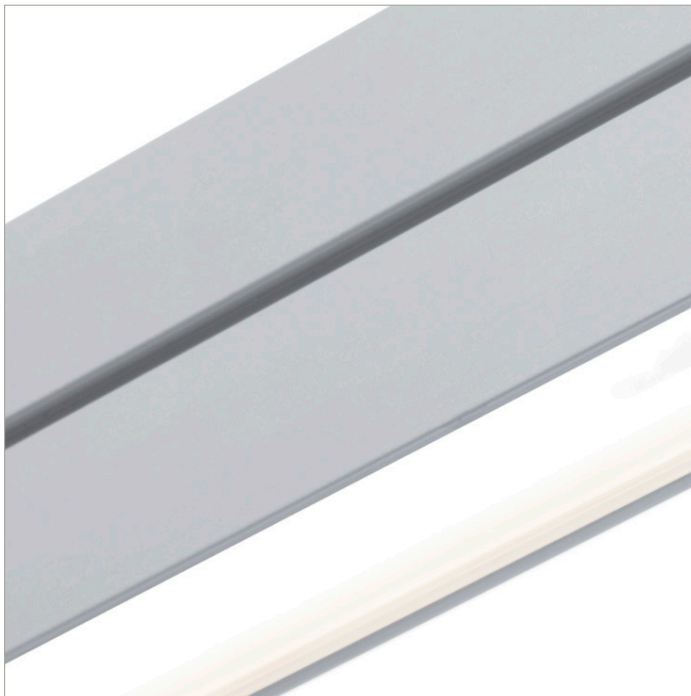
DoubleBox™ | 107 | 120° Batwing, up | 120° FlyWing™, down | 80 CRI | LO

107-DB-XX-4-48-XX-XX-XX-XX-X-X-Z-LO-35-G1G2-X-XX-X

	2700K	3000K	3500K	4000K
Efficacy - Lumens per Watt	96	99	101	103
Total Lumens, 4' rail length (1219mm)	2844	2934	2994	3053
Lumens per foot (305mm)	711	733	748	763
Lumens per foot UP (305mm)	356	367	374	382
Lumens per foot DOWN (305mm)	356	367	374	382
Input Power (W), 4' rail length (1219mm)	29.9	29.9	29.9	29.9
Watts per foot (305mm)	7.5	7.5	7.5	7.5
CRI	85	85	85	85

Due to the large number of options in Vode's product offering, most Vode IES reports are factored reports prepared from source reports. Source reports are the IES test reports prepared for Vode by an NVLAP accredited photometric test laboratory. Factored reports are based on data from the Vode source reports.

If the data above is in black, it is directly from a Vode source report. If it is in grey, it is factored from Vode source reports. Reference details on Vode source reports can be found on the [IES File Finder](#) page on [vode.com](#).



IES Report

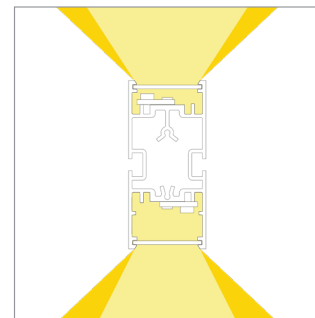
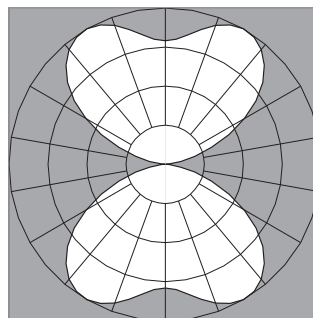
DoubleBox™ | 107 | 120° Batwing, up | 120° FlyWing™, down | 80 CRI | SO

107-DB-XX-4-48-XX-XX-XX-XX-X-X-Z-SO-35-G1G2-X-XX-X

	2700K	3000K	3500K	4000K
Efficacy - Lumens per Watt	119	122	125	127
Total Lumens, 4' rail length (1219mm)	5688	5867	5987	6107
Lumens per foot (305mm)	1422	1467	1497	1527
Lumens per foot UP (305mm)	711	734	749	763
Lumens per foot DOWN (305mm)	711	734	749	763
Input Power (W), 4' rail length (1219mm)	48.1	48.1	48.1	48.1
Watts per foot (305mm)	12.1	12.1	12.1	12.1
CRI	85	85	85	85

Due to the large number of options in Vode's product offering, most Vode IES reports are factored reports prepared from source reports. Source reports are the IES test reports prepared for Vode by an NVLAP accredited photometric test laboratory. Factored reports are based on data from the Vode source reports.

If the data above is in black, it is directly from a Vode source report. If it is in grey, it is factored from Vode source reports. Reference details on Vode source reports can be found on the [IES File Finder](#) page on [vode.com](#).



IES Report

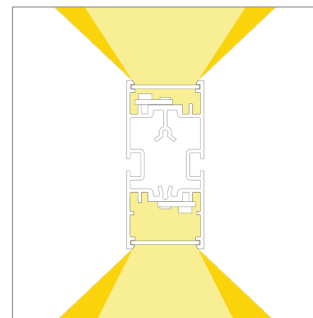
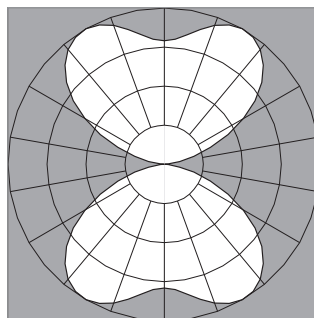
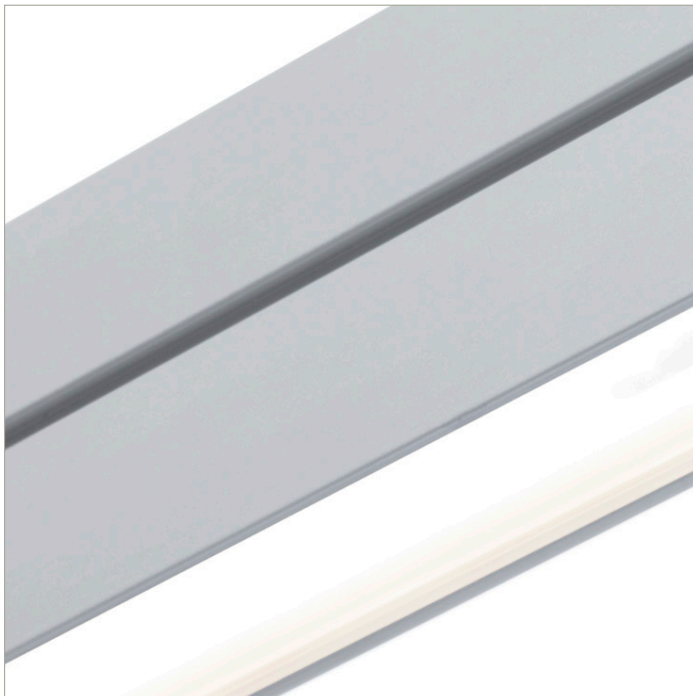
DoubleBox™ | 107 | 120° Batwing, up | 120° FlyWing™, down | 80 CRI | HO

107-DB-XX-4-48-XX-XX-XX-XX-X-X-Z-HO-35-G1G2-X-XX-X

	2700K	3000K	3500K	4000K
Efficacy - Lumens per Watt	110	114	116	118
Total Lumens, 4' rail length (1219mm)	10807	11148	11375	11603
Lumens per foot (305mm)	2702	2787	2844	2901
Lumens per foot UP (305mm)	1351	1394	1422	1450
Lumens per foot DOWN (305mm)	1351	1394	1422	1450
Input Power (W), 4' rail length (1219mm)	98.4	98.4	98.4	98.4
Watts per foot (305mm)	24.7	24.7	24.7	24.7
CRI	85	85	85	85

Due to the large number of options in Vode's product offering, most Vode IES reports are factored reports prepared from source reports. Source reports are the IES test reports prepared for Vode by an NVLAP accredited photometric test laboratory. Factored reports are based on data from the Vode source reports.

If the data above is in black, it is directly from a Vode source report. If it is in grey, it is factored from Vode source reports. Reference details on Vode source reports can be found on the [IES File Finder](#) page on [vode.com](#).



IES Report

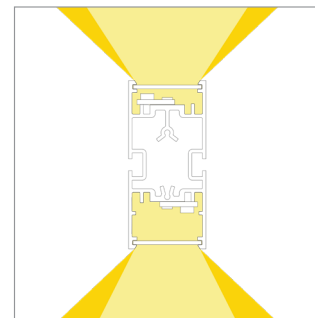
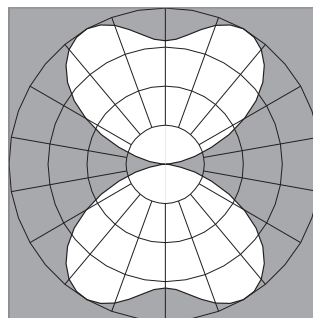
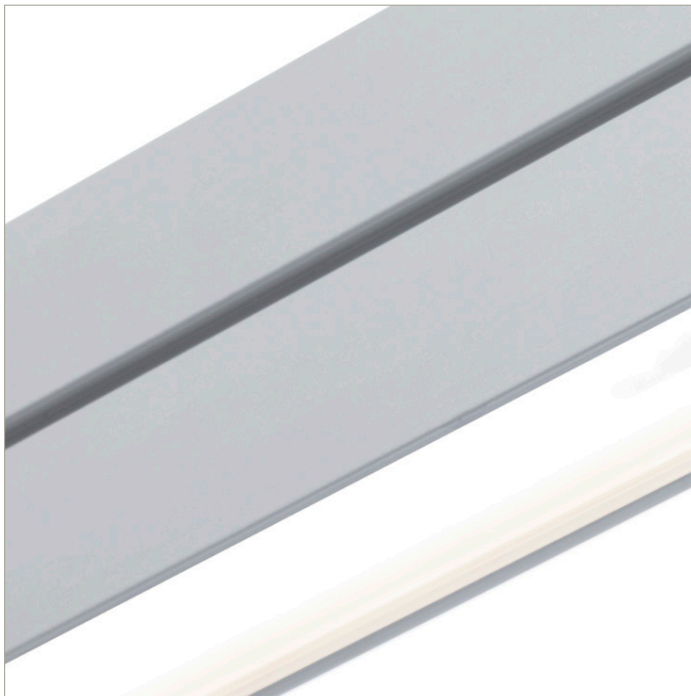
DoubleBox™ | 107 | 120° Batwing, up | 120° FlyWing™, down | 90 CRI | LO

107-DB-XX-4-48-XX-XX-XX-XX-X-X-Z-LO-359-G1G2-X-XX-X

	2700K	3000K	3500K	4000K
Efficacy - Lumens per Watt	82	85	87	89
Total Lumens, 4' rail length (1219mm)	2452	2529	2581	2632
Lumens per foot (305mm)	613	632	645	658
Lumens per foot UP (305mm)	307	316	323	329
Lumens per foot DOWN (305mm)	307	316	323	329
Input Power (W), 4' rail length (1219mm)	29.9	29.9	29.9	29.9
Watts per foot (305mm)	7.5	7.5	7.5	7.5
CRI	96	96	96	96

Due to the large number of options in Vode's product offering, most Vode IES reports are factored reports prepared from source reports. Source reports are the IES test reports prepared for Vode by an NVLAP accredited photometric test laboratory. Factored reports are based on data from the Vode source reports.

If the data above is in black, it is directly from a Vode source report. If it is in grey, it is factored from Vode source reports. Reference details on Vode source reports can be found on the [IES File Finder](#) page on [vode.com](#).



IES Report

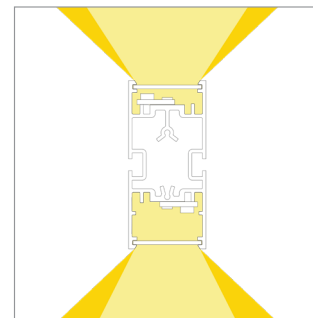
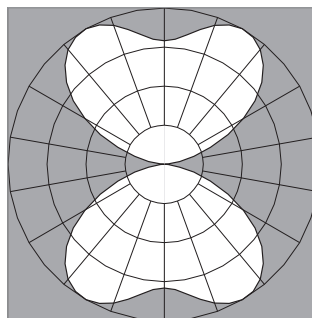
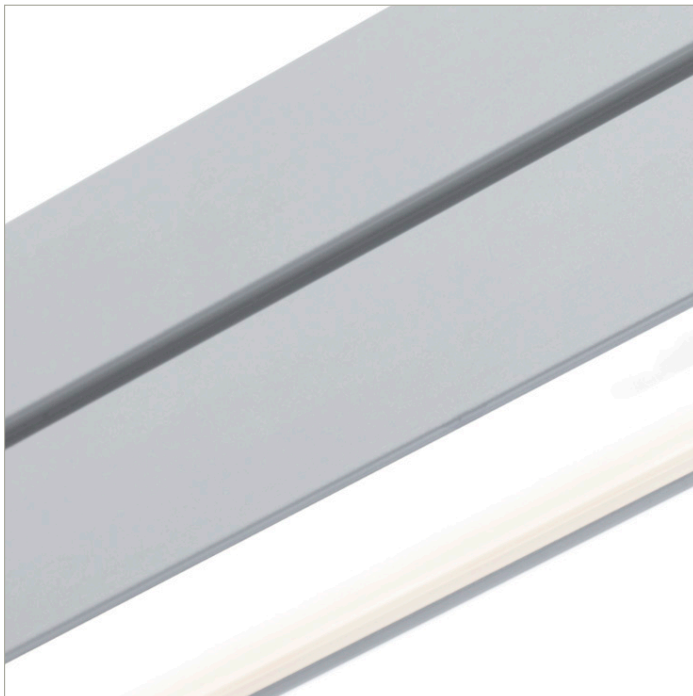
DoubleBox™ | 107 | 120° Batwing, up | 120° FlyWing™, down | 90 CRI | SO

107-DB-XX-4-48-XX-XX-XX-XX-X-X-Z-SO-359-G1G2-X-XX-X

	2700K	3000K	3500K	4000K
Efficacy - Lumens per Watt	102	105	107	110
Total Lumens, 4' rail length (1219mm)	4903	5058	5161	5264
Lumens per foot (305mm)	1226	1265	1290	1316
Lumens per foot UP (305mm)	613	632	645	658
Lumens per foot DOWN (305mm)	613	632	645	658
Input Power (W), 4' rail length (1219mm)	48.25	48.25	48.25	48.25
Watts per foot (305mm)	12.1	12.1	12.1	12.1
CRI	96	96	96	96

Due to the large number of options in Vode's product offering, most Vode IES reports are factored reports prepared from source reports. Source reports are the IES test reports prepared for Vode by an NVLAP accredited photometric test laboratory. Factored reports are based on data from the Vode source reports.

If the data above is in black, it is directly from a Vode source report. If it is in grey, it is factored from Vode source reports. Reference details on Vode source reports can be found on the [IES File Finder](#) page on [vode.com](#).



IES Report

DoubleBox™ | 107 | 120° Batwing, up | 120° FlyWing™, down | 90 CRI | HO

107-DB-XX-4-48-XX-XX-XX-XX-X-X-Z-HO-359-G1G2-X-XX-X

	2700K	3000K	3500K	4000K
Efficacy - Lumens per Watt	95	98	100	102
Total Lumens, 4' rail length (1219mm)	9316	9610	9806	10002
Lumens per foot (305mm)	2329	2403	2452	2501
Lumens per foot UP (305mm)	1165	1201	1226	1250
Lumens per foot DOWN (305mm)	1165	1201	1226	1250
Input Power (W), 4' rail length (1219mm)	98.44	98.44	98.44	98.44
Watts per foot (305mm)	24.7	24.7	24.7	24.7
CRI	96	96	96	96

Due to the large number of options in Vode's product offering, most Vode IES reports are factored reports prepared from source reports. Source reports are the IES test reports prepared for Vode by an NVLAP accredited photometric test laboratory. Factored reports are based on data from the Vode source reports.

If the data above is in black, it is directly from a Vode source report. If it is in grey, it is factored from Vode source reports. Reference details on Vode source reports can be found on the [IES File Finder](#) page on [vode.com](#).